



South Yorkshire

**POLICE**

# Introducing the new Local Policing Model

**Briefing for partners**

January 2016



South Yorkshire

**POLICE**

## Financial Context

### **The funding challenge so far**

- Significant budget reductions required from Government's Comprehensive Spending Review
- SYP has saved approximately £51m since 2011 – how?
- Decision to focus on redesigning non-operational support functions
  - Reduced management and streamlined processes
  - Centralised finance, policy, performance, crime management
  - Reduced enquiry desks, canteens, administration, corporate communications, professional standards, legal services, stores & tailoring, printing, criminal justice units, accommodation, expenses, vehicle hire



South Yorkshire

**POLICE**

## Financial Context

### **The funding challenge so far, continued...**

- Budget savings across all areas, recruitment/promotion freezes
- Voluntary enhanced redundancy, overtime reductions
- Regional and collaborative working

### **The Force's current financial position**

- The Force needs to cut its budget by around £29m for April 2017 and £17m of this remains unidentified
- SYP's current total budget is £248m
- Approximately 90% of SYP's budget is spent on staff
- Frontline policing has been protected until now



South Yorkshire

**POLICE**

## Requirements

### **Requirements for the new Local Policing Model:**

- Neighbourhoods at the heart of South Yorkshire policing
- Four policing areas serving Barnsley, Doncaster, Rotherham and Sheffield
- Continue to deliver against performance targets
- Deliver £8.1m savings by March 2016
- Maximise the concept of right resource, first time
- Maintain emergency response



South Yorkshire

**POLICE**

## Savings

### **How are the savings achieved in local policing?**

- Approximately 145 police officers will be removed from local policing structures by disestablishing posts , as officers retire, over a two-year period
  - 3 chief inspectors (15% of roles)
  - 9 inspectors (15%)
  - 15 sergeants (8%)
  - 118 constables (7.5%)
- Consultation commenced with police staff employed as civilian investigators with at risk notices served



South Yorkshire

**POLICE**

## Headline changes

### **The Local Policing Model delivers:**

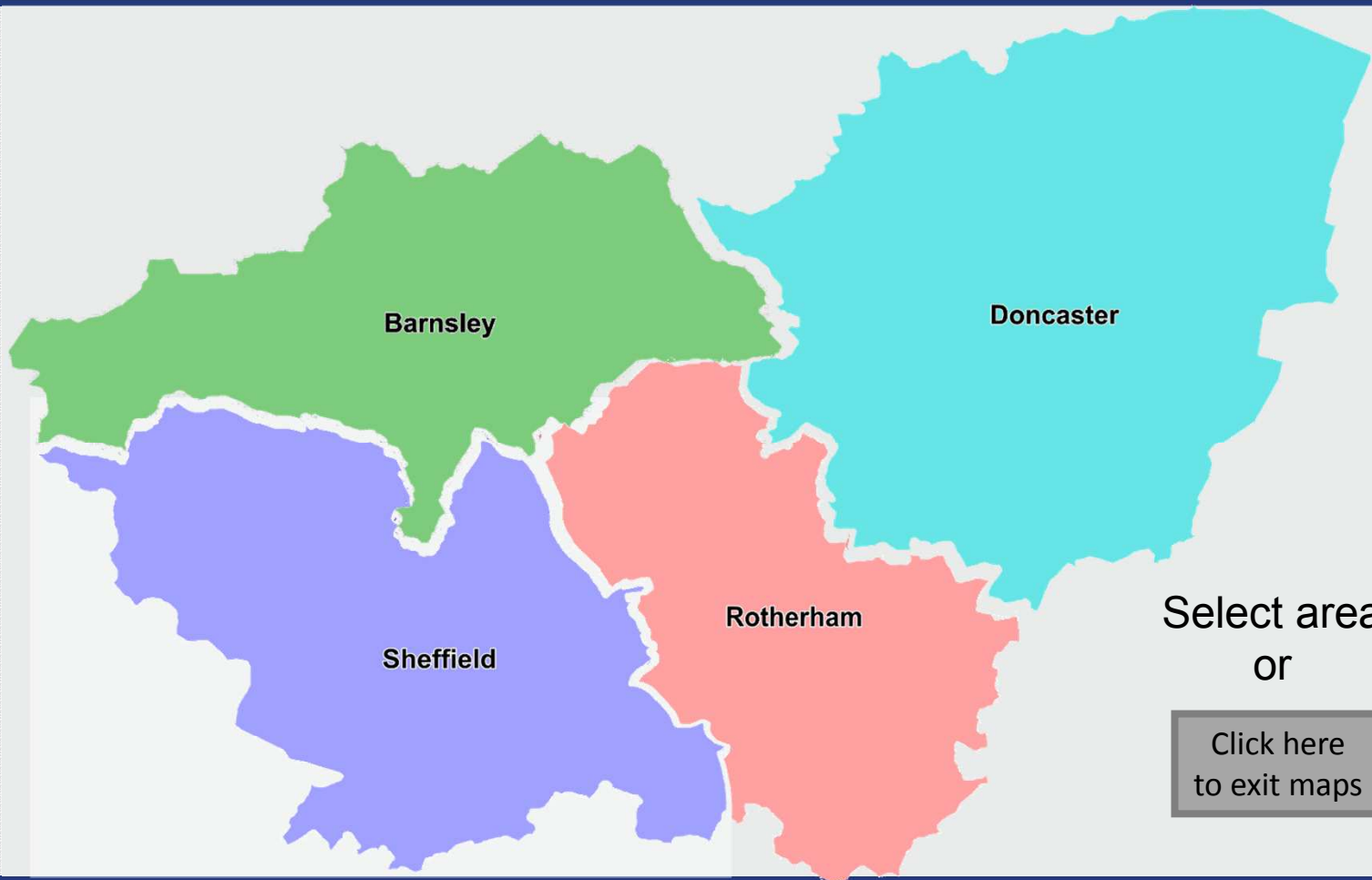
- Highly-visible, dedicated police teams available 24/7
- Named inspectors and PCSOs for every community
- Flexible resources to meet demands across an area
- Joint briefings and consistent structures to remove duplication
- New mobile technology to enable officers to work in the communities they serve for longer
- Support units in each area focussing on proactive investigations, antisocial behaviour, schools and offender management
- Ownership of crimes, offering a better service for victims



South Yorkshire

**POLICE**

## Local Policing Units (LPUs)





South Yorkshire

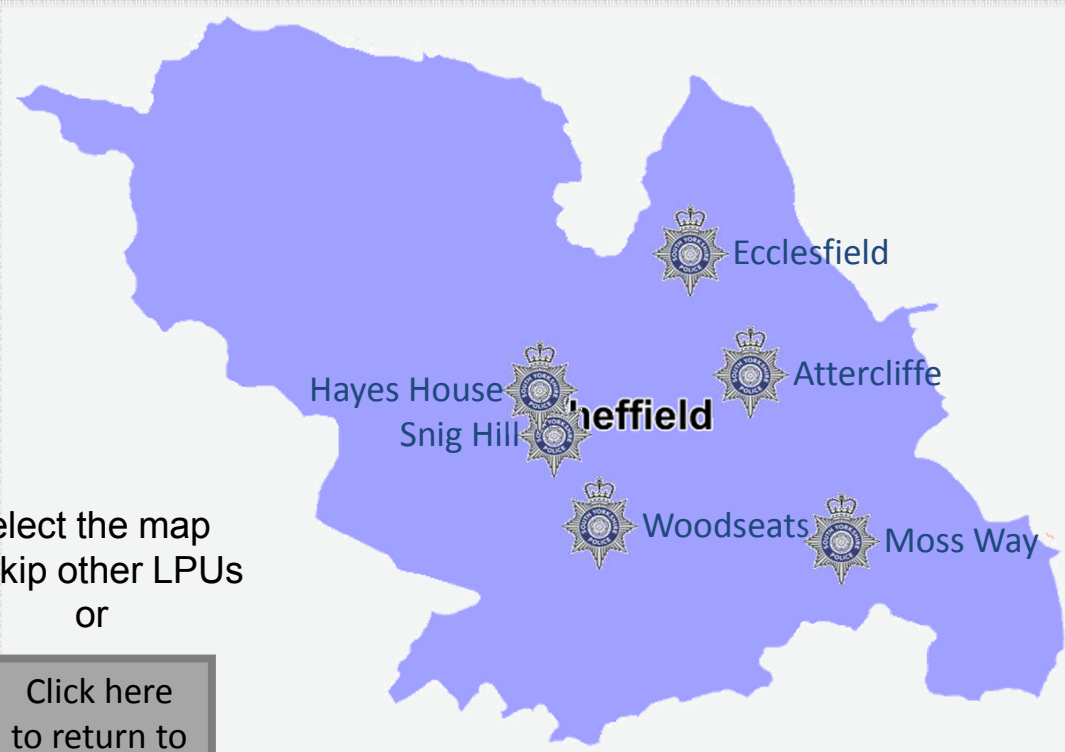
# POLICE

## Sheffield Local Policing Unit

Go live: **14 September 2015**

Sheffield Local Policing Unit (LPU) will be made up of:

- 6 Local Policing Teams (LPTs), split into Sheffield East & Sheffield West and each serviced by 5 shifts
- 1 Local Policing Support Unit (LPSU)



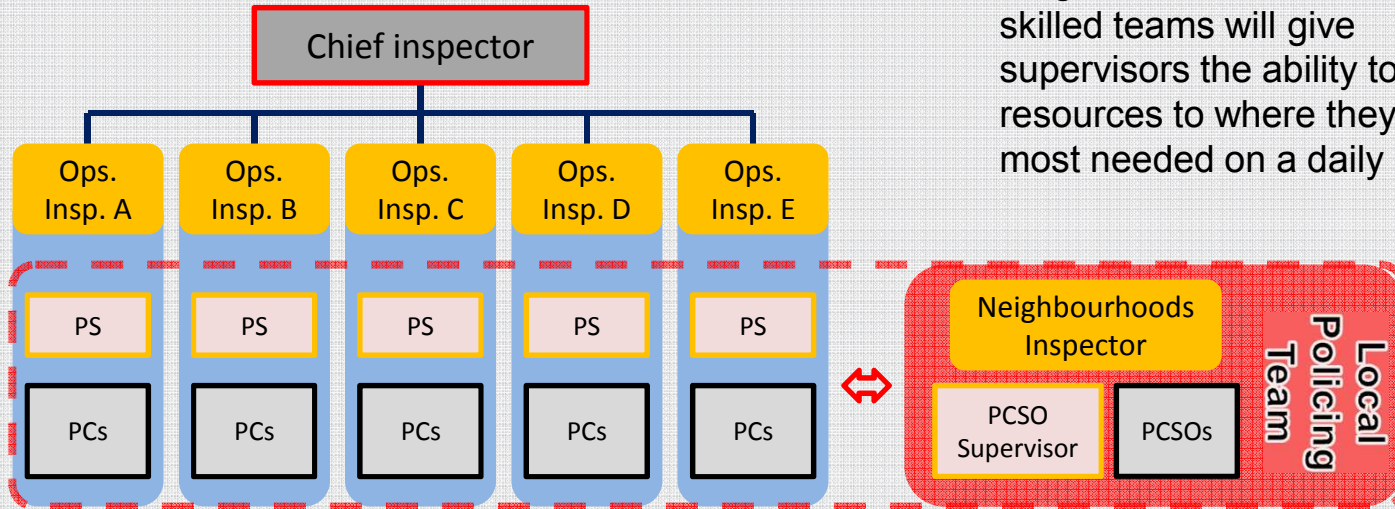
Select the map to skip other LPUs or

Click here to return to LPU screen





## Local Policing Teams



Larger, more flexible multi-skilled teams will give supervisors the ability to move resources to where they are most needed on a daily basis

All officers will start their shift at their LPT base where they will be briefed together, avoiding duplication, and then deployed with new mobile technology to keep them in the communities they serve for longer

Each community will have a named inspector and dedicated PCSOs

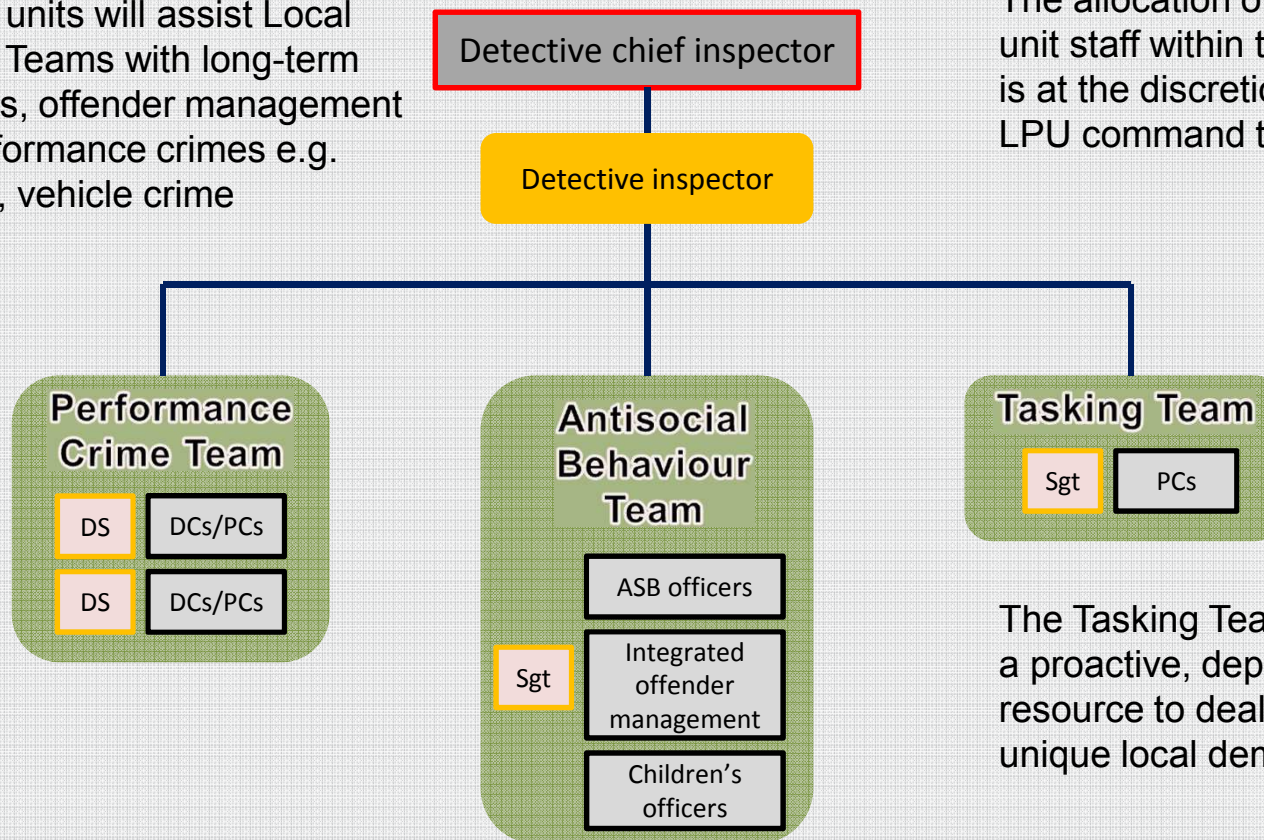
[Click here to return to LPU screen](#)



## Local Policing Support Units

Support units will assist Local Policing Teams with long-term problems, offender management and performance crimes e.g. burglary, vehicle crime

The allocation of support unit staff within this structure is at the discretion of the LPU command team



The Tasking Team are a proactive, deployable resource to deal with unique local demand



South Yorkshire

**POLICE**

## Specialist support

**Local Policing Units will work closely with new specialist resources:**

### **Force Crime Unit**

- Go live 2 March 2015
- Flexible resources dealing with serious and series crimes
- Two centralised hubs supporting Local Policing Units
  - Moss Way serving Rotherham/Sheffield
  - Robert Dyson House serving Barnsley/Doncaster

### **Public Protection Unit**

- Go live 1 April 2015
- Increased capability and capacity to protect vulnerable people
- Locally based, centrally managed
- Additional 62 staff across the county



South Yorkshire

**POLICE**

## Reducing demand

**How will the Force maintain and improve its service with fewer people?**

### **Going live Jan/Feb 2015**

- New burglary and vehicle crime processes
  - Listening to victim needs
  - Clarity for call handlers, investigating officers and support services
  - Remove ineffective and time-consuming work on the frontline
- Rollout of tablet devices to keep staff in communities for longer

### **Next steps**

- New drive-off process
- New missing person process
- Violent crime review
- New handheld devices to replace BlackBerrys



South Yorkshire

**POLICE**

## District Review

# Questions?

[district\\_review\\_team@southyorks.pnn.police.uk](mailto:district_review_team@southyorks.pnn.police.uk)

This page is intentionally left blank